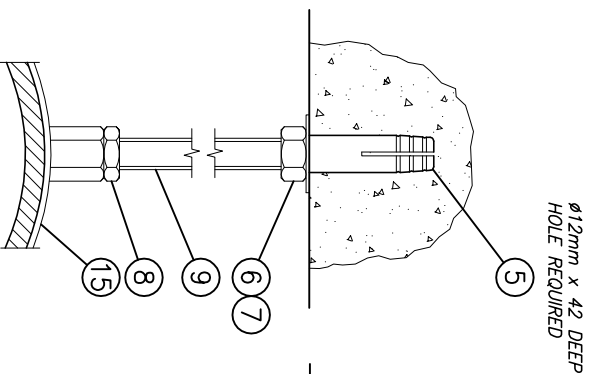
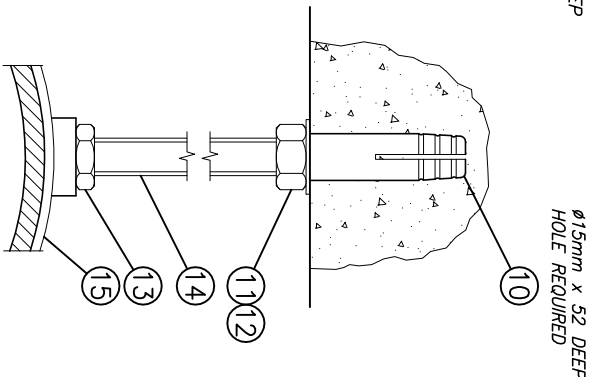


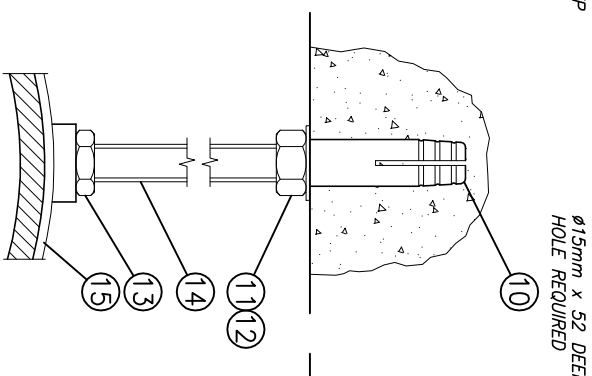
HDPE PIPE, $\phi 40$ – $\phi 12.5$



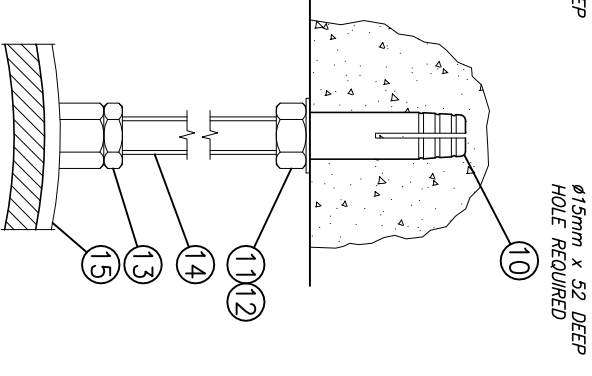
HDPE PIPE, $\phi 160$



HDPE PIPE, $\phi 200$



HDPE PIPE, $\phi 250$



HDPE PIPE, $\phi 315$

THIS DRAWING AND DETAILS CONTAINED WITHIN ARE COPYRIGHT OF G.R.&R.ROSS LTD.
REPRODUCTION OR USE IS PROHIBITED WITHOUT WRITTEN PERMISSION.

Item	Description	Qty	Part No	Item	Description	Qty	Part No
1	Wedge Anchor, M8 (ZP)	-	-	11	Full Nut, M12, Grade 8 (BZP)	-	-
2	Full Nut, M8, Grade 8 (BZP)	-	-	12	Plain Washer, M12 (BZP)	-	-
3	Repair Washer, M8 (BZP)	-	-	13	Lock Nut, M12, Grade 8 (BZP)	-	-
4	Threaded Rod, M8 (BZP)	-	-	14	Threaded Rod, M12 (BZP)	-	-
5	Wedge Anchor, M10 (ZP)	-	-	15	Pipe Clip (Galv) to suit pipe diameter	-	-
6	Full Nut, M10, Grade 8 (BZP)	-	-				
7	Repair Washer, M10 (BZP)	-	-				
8	Lock Nut, M10, Grade 8 (BZP)	-	-				
9	Threaded Rod, M10 (BZP)	-	-				
10	Wedge Anchor, M12 (ZP)	-	-				



ROSS ADT
30 BYRON STREET, DUNDEE DD3 6QX
Tel 01382 825050 Fax 01382 825100
e-mail: info@rossad.com

Drawing No
AD511A

Drawn By	W Jackson	Date	19/08/04
Scale	n.t.s.	Rev	00

Drawing Title
TYPICAL FIXING DETAIL: HDPE DOWNPIPE TO
BLOCKWORK (PIPE CLIP, BRACKETRY)