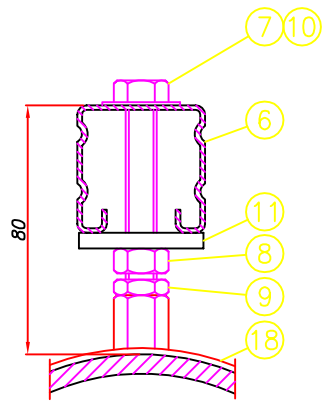
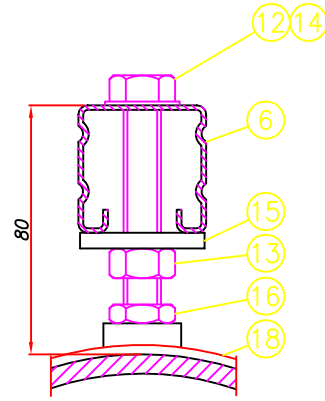


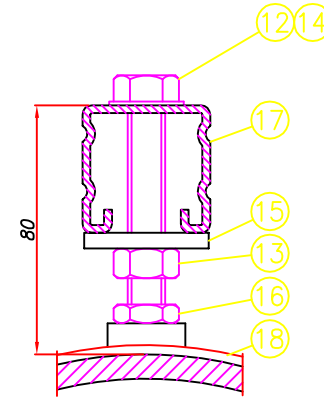
HDPE PIPE, ø40 – ø125



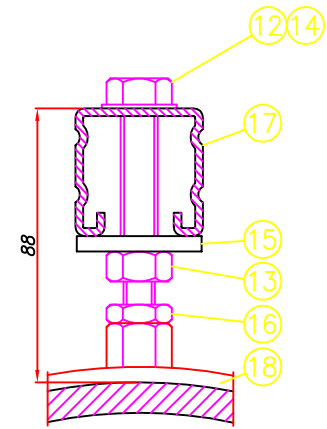
HDPE PIPE, ø160



HDPE PIPE, ø200



HDPE PIPE, ø250



HDPE PIPE, ø315

THIS DRAWING AND DETAILS CONTAINED WITHIN ARE COPYRIGHT OF HYDROMAX INC. REPRODUCTION OR USE IS PROHIBITED WITHOUT WRITTEN PERMISSION.

Item	Description	Qty	Part No	Item	Description	Qty	Part No
1	Channel support system (Galv) 41/21/1.5	-	-	11	Square Washer, M10 (BZP)	-	-
2	Hex Hd Set Screw, M8 x 80, Grade 8.8 (BZP)	-	-	12	Hex Hd Set Screw, M12 x 80, Grade 8.8 (BZP)	-	-
3	Full Nut, M8, Grade 8 (BZP)	-	-	13	Full Nut, M12, Grade 8 (BZP)	-	-
4	Repair Washer, M8 (BZP)	-	-	14	Plain Washer, M12 (BZP)	-	-
5	Square Washer, M8 (Galv)	-	-	15	Square Washer, M12 (BZP)	-	-
6	Channel support system (Galv) 41/41/1.5	-	-	16	Lock Nut, M12, Grade 8 (BZP)	-	-
7	Hex Hd Set Screw, M10 x 70, Grade 8.8 (BZP)	-	-	17	Channel support system (Galv) 41/41/2.5	-	-
8	Full Nut, M10, Grade 8 (BZP)	-	-	18	Pipe Clip (Galv) to suit pipe diameter	-	-
9	Lock Nut, M10, Grade 8 (BZP)	-	-				
10	Repair Washer, M10 (BZP)	-	-				



Drawn By	Date
W Jackson	01/04/04
Scale	Rev
1:2	01
Drawing No	
AD500	

Drawing Title

TYPICAL FIXING DETAIL; HDPE PIPE TO CONTINUOUS RAIL SUPPORT SYSTEM